



Electrical Components Manufacturer Since 1988



Switch on Safety, Switch to ONCCY

Leading Manufacturer

Passed IEC/EN60947-3:2009+A1+A2, AS60947.3, UL5081, GB/T14048.3 test, owned TUV, CE, CB, SAA, UL, CCC certifications.

A leading brand providing a wide range of DC/AC components for solar PV, battery energy storage, and EV charging system protection, ONCCY Electrical Products are certified by CE, IEC, TÜV, CCC, SAA, and UL.

With more than 30 years of switch production experience, 30,000 square meters of self-owned plant, 46 countries and regions are selling and using our products.

 30+ Years of Experience

 100+ PCT Patents

 100+ Countries Distribution

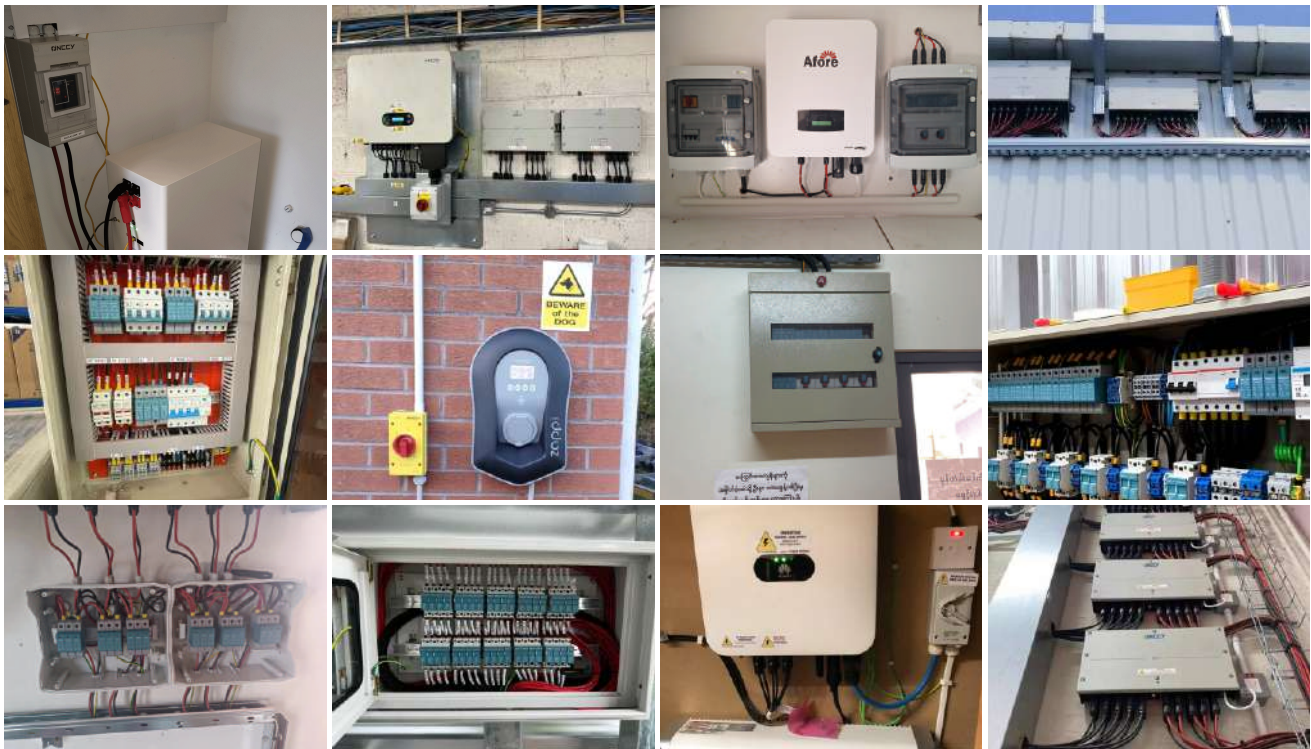
 90% Automation Production

 20,000+ Projects

 20% of Annual sales to R&D

Since 1988 Year, Onccy Electrical main products are including DC and AC circuit breaker (MCB), DC and AC isolation switch, DC molded case circuit breaker (MCCB), DC fuse, DC lighting surge protector (SPD) and so on. Now we are favored by the market as a trustworthy partner to our investors, installers and end consumers.

Project Cases



DC ELECTRICAL COMPONENTS

DC Isolation Switch **EDS1**



Ui:1500VDC Ue:600~1200VDC Ie:9~32A

- The maximum on-off switching time is less than 3ms
- The external box installation meets the IP66 protection class

DC Isolation Switch **EDS5/6/7**



Ui:1600VDC Ue:600~1600VDC Ie:3~63A

- The maximum on-off switching time is less than 3ms
- A variety of installation methods to meet different needs
- Modular design, available 2-10 pole
- Positive contact, reverse contact or horizontal contact are available

DC Surge Protection Device **EDP**



Ue:24~1500VDC I_{max}:20~40kA

- Category: T2,T1+T2
- Housing: Pluggable design
- Communication terminals are optional

DC Miniature Circuit Breaker **EDB1**



Ui:1200VDC Ue:100~1200VDC Ie:10~250A

- Overload and the short circuit protection function
- Rated short circuit breaking capacity up to 10 kA
- Non-polarity and Polarity both available

DC ELECTRICAL COMPONENTS

DC MCCB EDM3



Ui:1000VDC Ue:500VDC Ie:125~250A

- High breaking capacity, reliable insulation
- Overload protection and short-circuit protection
- A IP66 and UV resistance PC enclosure is optional

DC MCCB EM3DP



Ui:1000~1500VDC Ue:250~1500VDC Ie:63~800A

- High breaking capacity, reliable insulation
- Overload protection and short-circuit protection
- Smaller product volume, Anti arc cover optional

DC Fuse Holder EDFH



Ui:1000~1500VDC Ue:1000~1500VDC Ie:2~50A

- Ambient Temperature: -40°C~+90°C
- Flexible installation, easy to replace
- Fire-retardant shell, high temperature resistance

DC Disconnecter EHD



Ui:1500VDC Ue:1000~1500VDC Ie:160~800A

- Easy to install
- Safe reliable operation
- Designed for harsh environments
- AUX. contact easy-mounting

DC ELECTRICAL COMPONENTS

Firefighter Safety Switch ERS



Ui:1500VDC Ue:600~1500VDC Ie:9~55A

- PC+ABS material, IP66 protection grade
- Multi clock interface type optional (knockout hole / gland / MC4 terminal)
- The isolation switches are TUV, CE, CB, SAA certificated

Rapid Shutdown Switch ERP



Ue: 8~160V Ie:20A

- Slim size match module perfectly
- Flame retardant rating: UL94-V0
- Protection Level: IP68

Electric Box ECB/ ECBA



Ue:600~1500VDC IP65

- Wiring and Modular capacity from 4 to 36 modules
- Material:ABS or PC ABS or Metal Consumer Unit
- Degree of protection:IP65
- Suitable for PV system, equipped with SPDs and isolator swithes and so on

Solar DC Connector EPV



Ue:1500VDC Ie:40~50A

- Ambient temperature range:-40°C~+85°C
- Degree of protection:IP68
- Insulation material:PC/PPO
- Flame class:UL94-V0

AC ELECTRICAL COMPONENTS

AC Isolation Switch EAS50



Ui:500VAC Ue:250VAC, 440VAC Ie:20~63A

- 4pcs screws with protective caps for high strength locking
- IP66&UV resistance and flame-retardant material
- Dual 25mm threaded conduit entries on top and bottom

AC Isolation Switch EAS80



Ui:800VAC Ue:415VAC, 690VAC Ie:16~125A

- High-quality waterproof and easy to install
- The interior is made of high-conductivity nickel-phosphorus copper
- The shell is made of high-strength flame-retardant PC material

AC Isolation Switch EAS69



Ui:690VAC Ue:415VAC Ie:20~80A

- With alloy contacts electrical special silver long life and high reliability
- Small size, space-saving installation
- Construct a protective finger to make the operation safe

Metal Clad Switched Disconnecter EAS80



AC ELECTRICAL COMPONENTS

AC Miniature Circuit Breaker **ESM**



Ui:500VAC Ue:240/415VAC Ie:1~63A

- Overload and the short circuit protection function
- Rated short circuit breaking capacity up to 10KA
- Clear indication of the ON/OFF switch status

AC RCBO **ESRO**



Ui:500VAC Ue:240/415VAC Ie:1~63A

- Multiple breaking capacities for residential and industrial applications
- Supports multiple types of residual current protection: AC,A,B
- Suitable for single-phase or three-phase power grids

AC RCCB **ESL**



Ui:500VAC Ue:240/415VAC Ie:25~100A

- Two step snapping mechanism for easy efficient mounition in 35mm DIN Rail steadily
- Testing product's performance regularly



Ui:400VAC Ue:230VAC Ie:6~63A

- LED normal operation indication/fault indication function
- Rated current overload protection function and short-circuit protection function
- Arc fault protection function, overvoltage protection and Leakage protectionintelligent remote control

AC ELECTRICAL COMPONENTS

Energy Meter EM



Ue: 120~400VAC Ie:45~ 100A

- Single-phase energy analyzer with backlit LCD display with integrated touch keypad
- Particularly indicated for active energy metering cost allocation in applications up to 100A
- Housing for DIN-rail mounting, with IP51 front degree protection

Overvoltage And Undervoltage Protector OCP



Ui: 400/700VAC Ue:220/380VAC Ie:63A/80A

- 75 degree high temperature resistance and V0 flame retardant rating
- Provide undervoltage and overvoltage protection, with automatic recovery capability
- Network connection optional, supporting Tuya intelligent remote control

Modular Contactor EMC



Ue:AC12V/DC12V~AC380V/DC230V Ie:16~125A

- High degree of Electrical life
- Noiseless and hum free
- Compact design and auxiliary function

Impulse Relays EIR

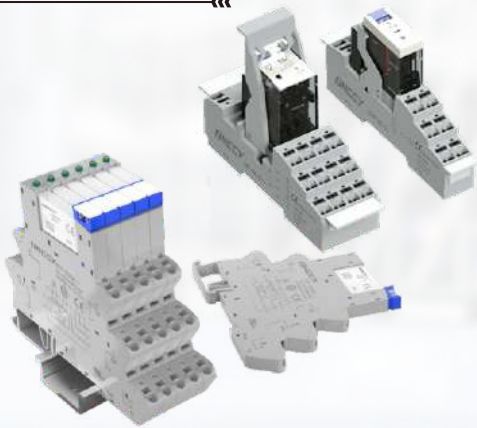


Ue: AC24V/DC12V~AC230V/DC110V Ie:16A

- Continue operation 10000 times action reliable
- Reduce the Pull-in noise
- Automatic winding process to ensure reliable opening and closing of the coil

INDUSTRIAL AUTOMATION

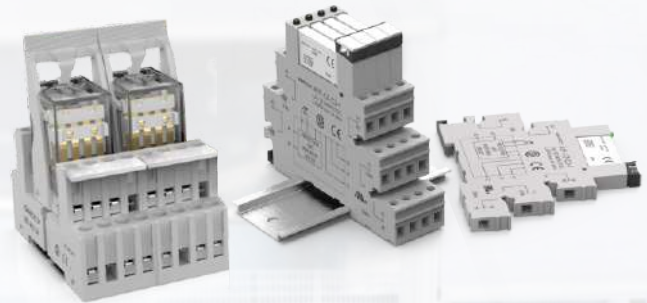
Relay and Push-in socket E18F/E41F/E157F



Ue:6~110VDC/6~240VAC Ie:5~12A

- Push-in wiring with integrated push button
- A single terminal is equipped with two Push-in sockets
- Connect via bridge
- With printable labels

Relay and Screw mounting socket E18F/E41F/E157F



Ue:6~110VDC/6~240VAC Ie:5~12A

- The screw mounting, and the installation is firm and convenient
- The shell is made of PC material, strong and wear resistant, safe and reliable
- Small volume, Easy installation

Plastic Buttons HQ



Ui:600VAC/DC Ue:24~380VAC/DC Ie:0.55A~10A

- IP65 Degree of protection
- Complete certifications: TUV, CE, UL
- Small size and light weight
- Modular contact blocks make installation and removal easier

Emergency Stop Switch



Ui:250VAC/DC Ue :250VAC/30VDC Ie:3A~5A

- Excellent safety and appearance design
- Gold-plated silver contact, long life 40000h
- Anti-flaming, Protection level IP65/Ik10
- Complete specifications, multiple styles to choose from